

## ACCESSIBLE PARKING & ACCESSIBLE ROUTE HANDOUT

### NEW OR REVISED PARKING FACILITIES:

#### PARKING AND ACCESS AISLES

- Van accessible parking space: 132 inches wide with 60 inch adjacent access aisle, or 96 inches wide with 96 inch adjacent access aisle; accessible car parking space: 96 inches wide with 60 inch adjacent access aisle. Angled van parking requires passenger side access aisle.
- Access aisle to be full length and level of parking space served, marked to discourage parking.
- Cars and vans, when parked in designated parking and access aisles, should not obstruct required clear width of adjacent accessible routes.

#### SLOPE AND VERTICAL CLEARANCE

- Parking spaces and access aisles to have surface slope not steeper than 1:48 or 2% slope.
- Van accessible parking vertical clearance: 98 inches for parking space, access aisle, and vehicular entrance and exit (*R-2 and R-3 within private garages: 84 inches*).

#### NUMBER REQUIRED AND LOCATION

- Number of van spaces: for every six (*or fraction of 6*) accessible parking spaces required, at least one should be a van accessible space.
- Signage required when the total number of parking spaces provided exceeds four.
- Parking should be located on the shortest accessible route of travel from adjacent parking to an accessible building entrance. Reference IBC section 1106.6 for variations and exceptions.

TABLE 1106.1  
ACCESSIBLE PARKING SPACES

TOTAL PARKING SPACES PROVIDED	REQUIRED MINIMUM NUMBER OF ACCESSIBLE SPACES*
1 to 25	1
26 to 50	2
51 to 75	3
76 to 100	4
101 to 150	5
151 to 200	6
201 to 300	7
301 to 400	8
401 to 500	9
501 to 1,000	2% of total
1,001 and over	20, plus one for each 100, or fraction thereof, over 1,000

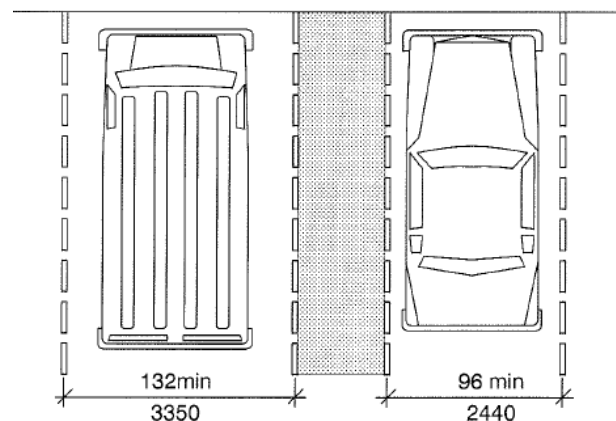


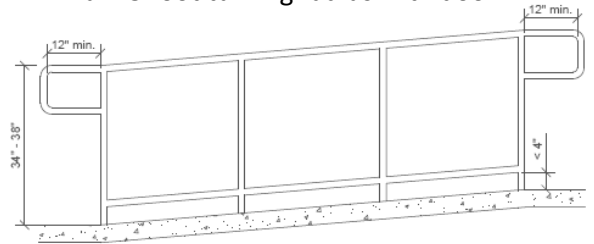
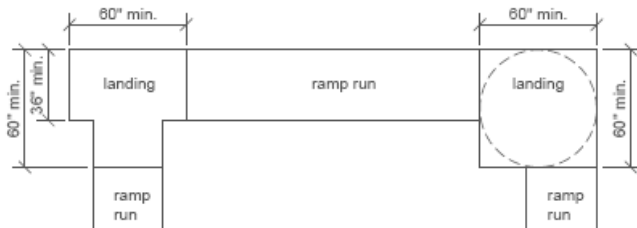
Fig. 502.2  
Vehicle Parking Space Size

\*See IBC 2015 for R-2, R-3, I-2 and Rehabilitation and outpatient physical therapy facilities

## ACCESSIBLE ROUTE TO BUILDINGS: EXTERIOR RAMPS AND CURB RAMPS

### RAMPS

- 60 inch long landings required at top and bottom of each ramp run for the width of ramp. At ramp direction change or building entry door, landing to provide minimum 5 foot turning radius with door in locked position.



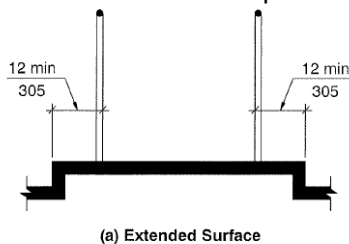
- Surfaces to be stable, firm, and slip resistant and prevent the accumulation of water on walking surfaces.
- Maximum slope 1:12, where the maximum rise for any run is 30 inches, cross slope of 1:48 or less.
- Minimum 44" width measured between handrails.

### HANDRAILS

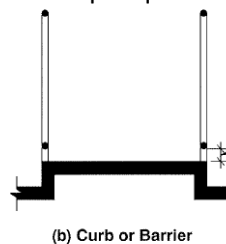
- Provide 34"-38" high handrails at ramp runs greater than 6 inches.
- Handrails to extend at least 12 inches beyond the top and bottom of any ramp run.
- Handrails to be graspable circular shape between 1 ¼ and 2 inches, typical. Other shapes per IBC 1012.3.
- Gripping surface of handrail to be continuous without interruption by support or other obstructions.

### RAMP AND LANDING EDGE PROTECTION

- A curb or barrier is required that prevents passage of a 4-inch sphere below the height of 4 inches for ramps without railings. When used, railings are required to have one of the following features:
  - An intermediate rail mounted 17-19 inches above the ramp or landing surface;
  - The surface of the ramp or landing extends 12 inches beyond the inside face of the railing.
  - Edge protection not required where the ramp rise is no more than 6 inches adjacent to grade, and ramp meets curb ramp requirements, subject to field inspection.



(a) Extended Surface



(b) Curb or Barrier

Fig. 405.9  
Ramp Edge Protection

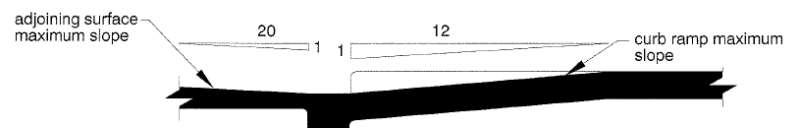


Fig. 406.2  
Counter Slope of Surfaces Adjacent to Curb Ramps



3200 Cedar Street  
Everett, WA 98201



425.257.8810  
425.257.8857 fax



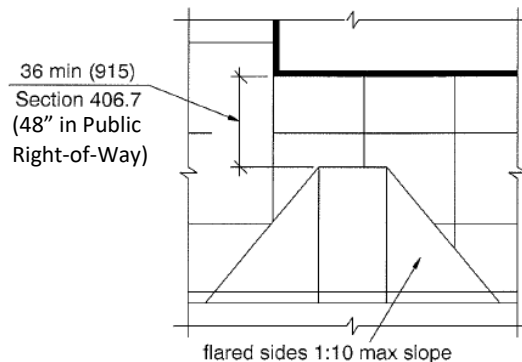
everetteps@everettwa.gov  
everettwa.gov/permits

## GUARDS

- Provide 42" high guards for portions of landings or ramp that are more than 30 inches above adjacent grade.
- Guard openings should not allow a 4 inch sphere to pass, except as noted in IBC section 1013.3.

## CURB RAMPS

- Curb ramps (36" minimum width; 48" width in Public R/W) and flared sides (1:10 maximum slope) should not be obstructed by parked vehicles or project into parking or parking access aisles.
- Three foot long landings (48" in Public R/W) should be provided at the tops of curb ramps, the full width of the ramp.
  - Alternative: flared sides should not exceed 1:12.



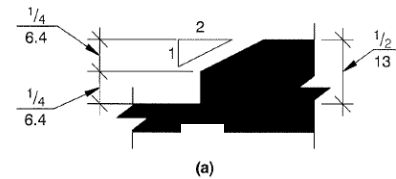
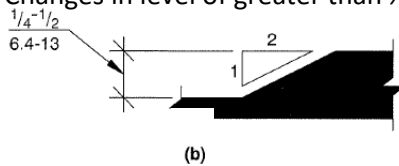
**Fig. 406.3**  
**Sides of Curb Ramps**

For additional information, see City of Everett Design and Construction Standards online at <https://everettwa.gov/1531/Design-Construction-Standards>

## ACCESSIBLE ROUTE TO BUILDINGS: BUILDING ENTRY

### LANDINGS

- Landing length in the direction of travel of not less than 44 inches; width not less than the door.
- Landing required on each side of door at same elevation.
- Changes in level of greater than 1/2 inch should be ramped.



3200 Cedar Street  
Everett, WA 98201



425.257.8810  
425.257.8857 fax



everetteps@everettwa.gov  
everettwa.gov/permits

## ACCESSIBLE ROUTE TO BUILDINGS: BUILDING ENTRY

### DOORS

- Maneuvering clearances for doors can overlap the landing area where doorways are adjacent to the ramp.
- Door opening to provide clear width of 32 inches between face of door (open at 90 degrees) and stop.
- Door hardware should not require tight grasping, tight pinching, or twisting of the wrist to operate.
- Door access clearances should be provided as shown below, on both sides of the accessible door.

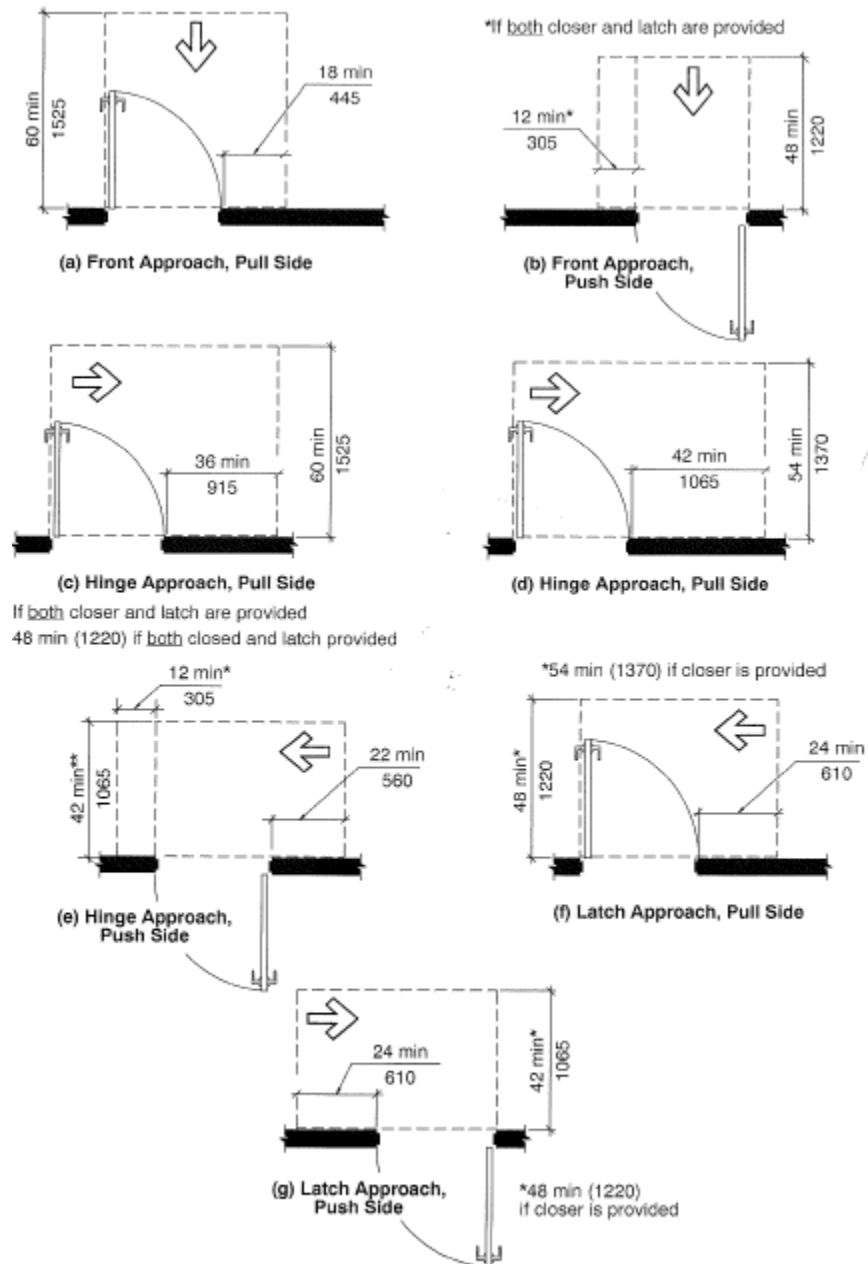


Fig. 404.2.3.1  
Maneuvering Clearance at Manual Swinging Doors



3200 Cedar Street  
Everett, WA 98201



425.257.8810  
425.257.8857 fax



everetteps@everettwa.gov  
everettwa.gov/permits

### **APPLICABLE CODES AND REFERENCES**

- International Building Code (IBC), 2015 Edition & WAC 51-50
- International Existing Building Code (IEBC), 2015 Edition & WAC 51-50
- International Property Maintenance Code (IPMC), 2015 Edition & WAC 51-50
- Accessible and Usable Buildings & Facilities, ANSI A117.1-2009 & WAC 51-50-005
- City of Everett Design and Construction Standards
- City of Everett Stormwater Management Manual



3200 Cedar Street  
Everett, WA 98201



425.257.8810  
425.257.8857 fax



[everetteps@everettwa.gov](mailto:everetteps@everettwa.gov)  
[everettwa.gov/permits](http://everettwa.gov/permits)